



Regional Engagement Workshop, BID Pacific
July 28th, 2017

Living Atlases community

Anne-Sophie Archambeau
Node manager GBIF France
archambeau@gbif.fr

Marie-Elise Lecoq
Lead developer, GBIF France: melecoq@gbif.fr

Dave Martin
Systems Architect, ALA: david.martin@csiro.au

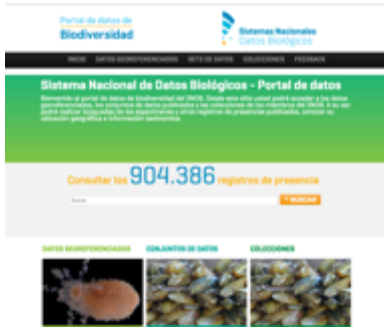
Countries involved



Katia Cezon : https://katia.carto.com/viz/92d56bd0-a0e1-11e6-a7e6-0e3ebc282e83/public_map



Data portals in production



Sistemas Nacionales Datos Biológicos (Argentina)



Instituto Chico Mendes de Conservação de Biodiversidad (Brazil)



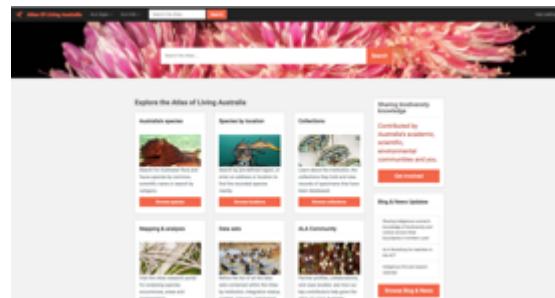
Atlas de la Biodiversidad de Costa Rica - CRBio



GBIF Portugal



NBN Atlas Scotland



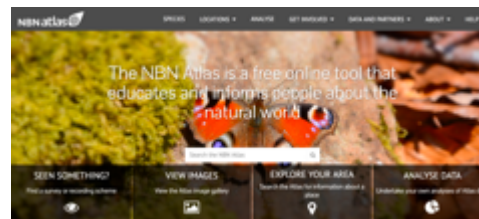
Atlas of Living Australia



GBIF Spain



GBIF France



NBN Atlas



BioAtlas sweden

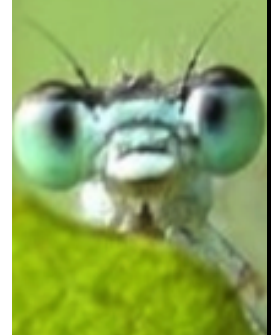
Why a national portal?

Gives users more possibilities in terms of map visualization

Adds more specific fields in the search engine

Increases data quality using national tools (flags, national checklist, etc.)

Gives a visibility to data publishers in the national language



[INICIO](#)

[INSTITUCIONES, COLECCIONES
Y PROYECTOS](#)

[JUEGOS
DE DATOS](#)

[DATOS
GEOREFERENCIADOS](#)

[BUSCAR](#)

[WWW.GBIF.ES](#)

[AYUDA](#)

[EXPLORAR
POR ÁREA](#)

Aprende **cómo** consultar datos de biodiversidad.

Buscar en el portal de datos

Búsqueda
avanzada



Información accesible a través del
Portal de Datos de GBIF.ES.



- REGISTROS: **16.861.387**
- JUEGOS DE DATOS: **234**
- INSTITUCIONES: **89**

Instituciones, colecciones y proyectos



Información de todas las entidades españolas que publican datos en GBIF (p.ej.: descripción, contacto, registros en línea, portal institucional).



Juegos de datos



Información de los juegos de datos de las instituciones y proyectos participantes en GBIF, detalles de los registros, licencias de uso, citación...



Datos georreferenciados



Mapa de los registros con coordenadas. Filtre, visualice y descargue los datos por nombre científico, grupo taxonómico, área geográfica...



Estamos ajustando algunas funcionalidades del portal. Disculpe las molestias que esto pueda ocasionar. Si observa cualquier incidencia agradeceríamos que nos la comunicase mediante mensaje a

CONTACTO

GBIF España. Unidad de Coordinación
Real Jardín Botánico - CSIC
C/ Claudio Moyano, 1

SERVICIOS

Publicación y alojamiento de datos: IPT
Alojamiento de imágenes
Formación



LES DONNÉES FRANÇAISES SUR LA BIODIVERSITÉ

Le portail français du GBIF ouvre l'accès aux données primaires sur la biodiversité fournies par des institutions françaises. Ces données d'occurrences d'espèces sont issues de collections ou d'observations de terrain et ont une distribution géographique mondiale.

? CONSULTER LES OCCURRENCES



Recherche avancée

LES COLLECTIONS



© Sophie Pamerlon

Informations sur les collections françaises sur la biodiversité. Vous retrouvez la description, les contacts et autres informations pratiques sur les acteurs français principaux de la biodiversité.

Accéder aux collections

144 JEUX DE DONNÉES



© Sophie Pamerlon

Accès aux données d'occurrences et informations sur les jeux de données publiés par les institutions ou collections participant au GBIF (licence, citation, etc.)

Accéder aux jeux de données

PORTAIL SPATIAL



© Sophie Pamerlon

Portail spatial du GBIF France.

Explorer les occurrences

Why use Atlas of Living Australia modules?

Tools working in others countries (Australia, Brazil, Portugal, Scotland, Spain)

Worldwide community around the project

Lasting solution from a technical point of view


Significant staff turnover especially in the IT team






Example of the NBN Atlas

They began by the NBN Atlas of Scotland...

NATIONAL BIODIVERSITY NETWORK NBN FORUM NBN ATLAS CONSULTANTS PORTAL


SEARCH 


CONTACT US  LOG IN  CHOOSE ATLAS ▾


NBN atlas SCOTLAND 


SPECIES LOCATIONS ▾ HABITATS ANALYSE GET INVOLVED ▾ DATA AND PARTNERS ▾ ABOUT ▾ HELP ▾


Use the NBN Atlas Scotland to learn about organisations collecting biodiversity information

Search the NBN Atlas Scotland 

SEEN SOMETHING?
Find a survey or recording scheme 

VIEW IMAGES
View the Atlas image gallery 

EXPLORE YOUR AREA
Search the Atlas for information about a place 


ANALYSE DATA
Undertake your own analyses of Atlas data 



Establishment of *Uva Ursula* T. S. with *anietu* *obostae* on


Example of the NBN Atlas

Then the NBN Atlas Wales....

NATIONAL BIODIVERSITY NETWORK NBN FORUM NBN ATLAS CONSULTANTS PORTAL


SEARCH 





ENGLISH CONTACT US  LOG IN  CHOOSE ATLAS ▾

NBN atlas
WALES 

SPECIES LOCATIONS ▾ ANALYSE GET INVOLVED ▾ DATA AND PARTNERS ▾ ABOUT ▾ HELP ▾

Use the NBN Atlas Wales to explore species records in Wales

Search the NBN Atlas Wales 

SEEN SOMETHING? Where to record a sighting 	VIEW IMAGES View the Atlas image gallery 	EXPLORE YOUR AREA Search the Atlas for information about a place 	ANALYSE DATA Undertake your own analyses of Atlas data 
---	---	---	---

Example of the NBN Atlas

And then the global NBN Atlas UK launched 1st April 2017

More atlases to come for England, Northern Ireland, Isle of Man....

DATA PARTNERS

Learn about, be inspired by, and join the organisations contributing information to this atlas. Follow these links to learn about our Atlas Data Partners or scroll through to find more.

THE NBN ATLAS

The NBN Atlas is a collaborative project that aggregates biodiversity data from multiple sources and makes it available and usable online. It is the UK's largest collection of freely available biodiversity data.

215,874,070
Occurrences

71,327
Species

725
Datasets

114
Data partners

[+ explore the NBN Atlas](#)

Communication

Mailing List

-ala.portal@lists.gbif.org

-Registration: lists.gbif.org/mailman/listinfo/ala-info

HipChat Room (for developers)

-Public access: <https://www.hipchat.com/gx1ej3K6Q>

Documentation

-Official web page on the GBIF.org

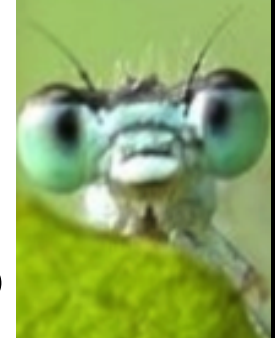
(demo) <https://demo.gbif.org/programme/82953/living-atlases>.

- ALA Key Technical Document

<http://www.gbif.org/project/2015-ala-internationalization>

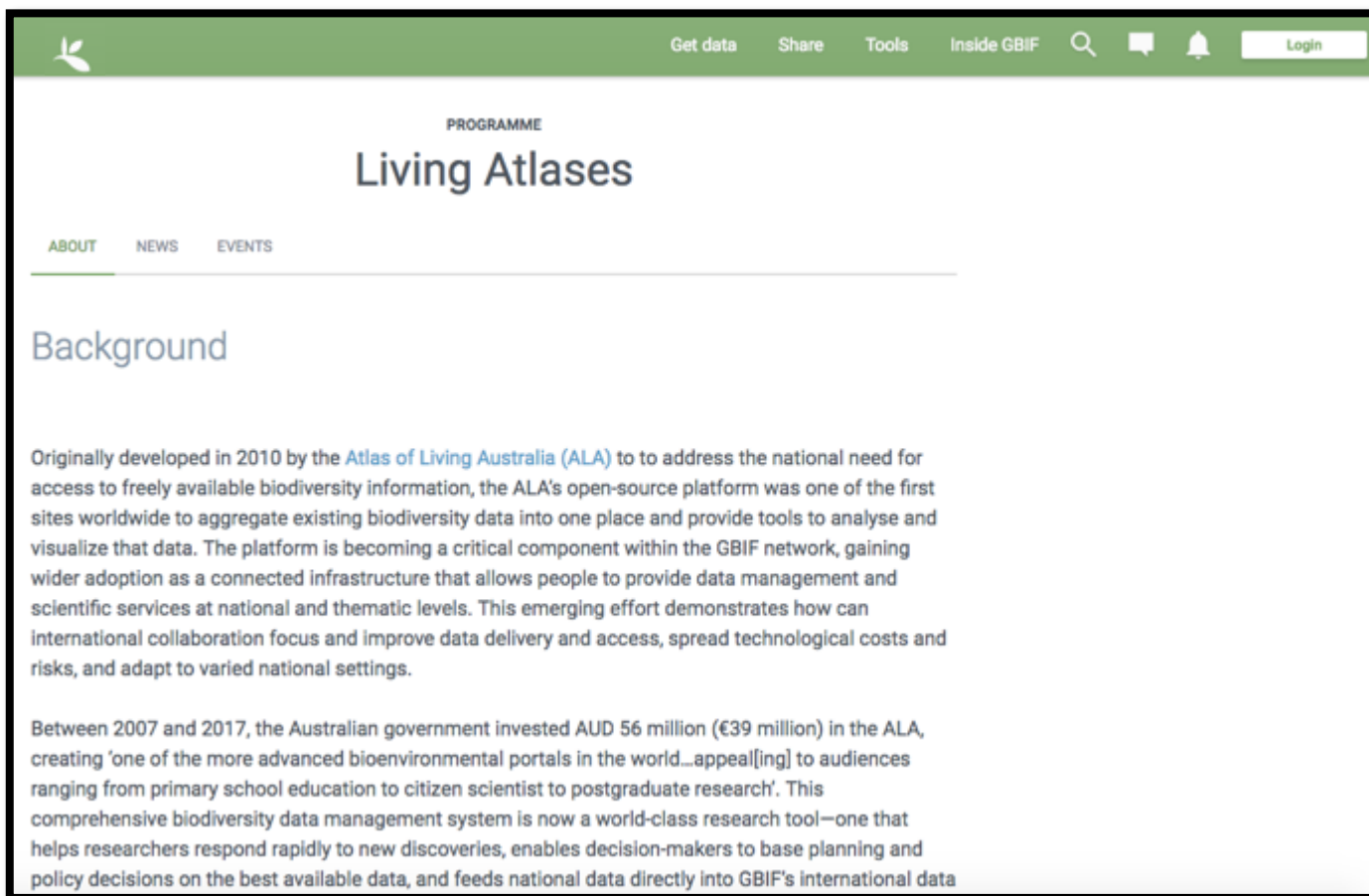
-ALA GitHub folder

<https://github.com/atlasoflivingaustralia/documentation>



Creation of a webpage for the community :

[https://demo.gbif.org/programme/82953/living-atlases.](https://demo.gbif.org/programme/82953/living-atlases)



The screenshot shows the 'Living Atlases' webpage. At the top, there is a green navigation bar with a leaf icon on the left and links for 'Get data', 'Share', 'Tools', 'Inside GBIF', a search icon, a chat icon, a bell icon, and a 'Login' button. Below the navigation bar, the page title 'PROGRAMME Living Atlases' is centered. Underneath, there are three menu items: 'ABOUT', 'NEWS', and 'EVENTS'. The main content area is titled 'Background' and contains two paragraphs of text. The first paragraph describes the platform's origin in 2010 and its role in the GBIF network. The second paragraph details the Australian government's investment in the platform between 2007 and 2017.

PROGRAMME

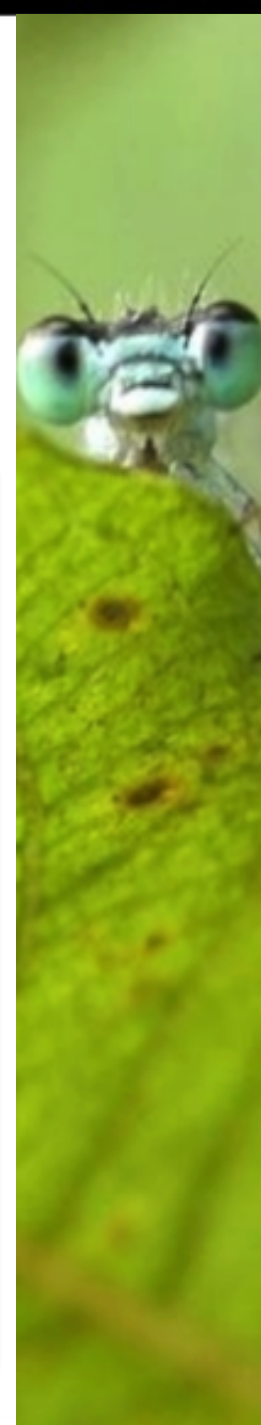
Living Atlases

ABOUT NEWS EVENTS

Background

Originally developed in 2010 by the [Atlas of Living Australia \(ALA\)](#) to address the national need for access to freely available biodiversity information, the ALA's open-source platform was one of the first sites worldwide to aggregate existing biodiversity data into one place and provide tools to analyse and visualize that data. The platform is becoming a critical component within the GBIF network, gaining wider adoption as a connected infrastructure that allows people to provide data management and scientific services at national and thematic levels. This emerging effort demonstrates how can international collaboration focus and improve data delivery and access, spread technological costs and risks, and adapt to varied national settings.

Between 2007 and 2017, the Australian government invested AUD 56 million (€39 million) in the ALA, creating 'one of the more advanced bioenvironmental portals in the world...appeal[ing] to audiences ranging from primary school education to citizen scientist to postgraduate research'. This comprehensive biodiversity data management system is now a world-class research tool—one that helps researchers respond rapidly to new discoveries, enables decision-makers to base planning and policy decisions on the best available data, and feeds national data directly into GBIF's international data



CESP Project :

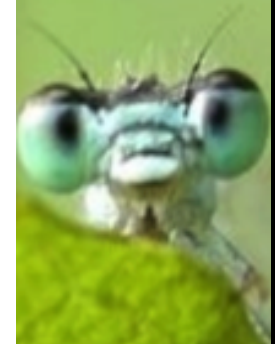
- CESP Regional event between 13 nodes to organize the 1-week workshop in 2018 in Madrid (advanced level).
- CESP Mentoring between Canadensys and GBIF France to help open the community to French-speaking countries.
- CESP Mentoring between GBIF Benin and GBIF France to install the Beninese data portal based on ALA

TDWG 2017 :

- A half-day Beginner workshop around Atlas of Living Australia tools

Collaboration

- GBIF Argentina has begin to help to install ALA in Colombia.
- GBIF Spain has begin to work on the installation of the ALA portal in GBIF Andorra.



Future...

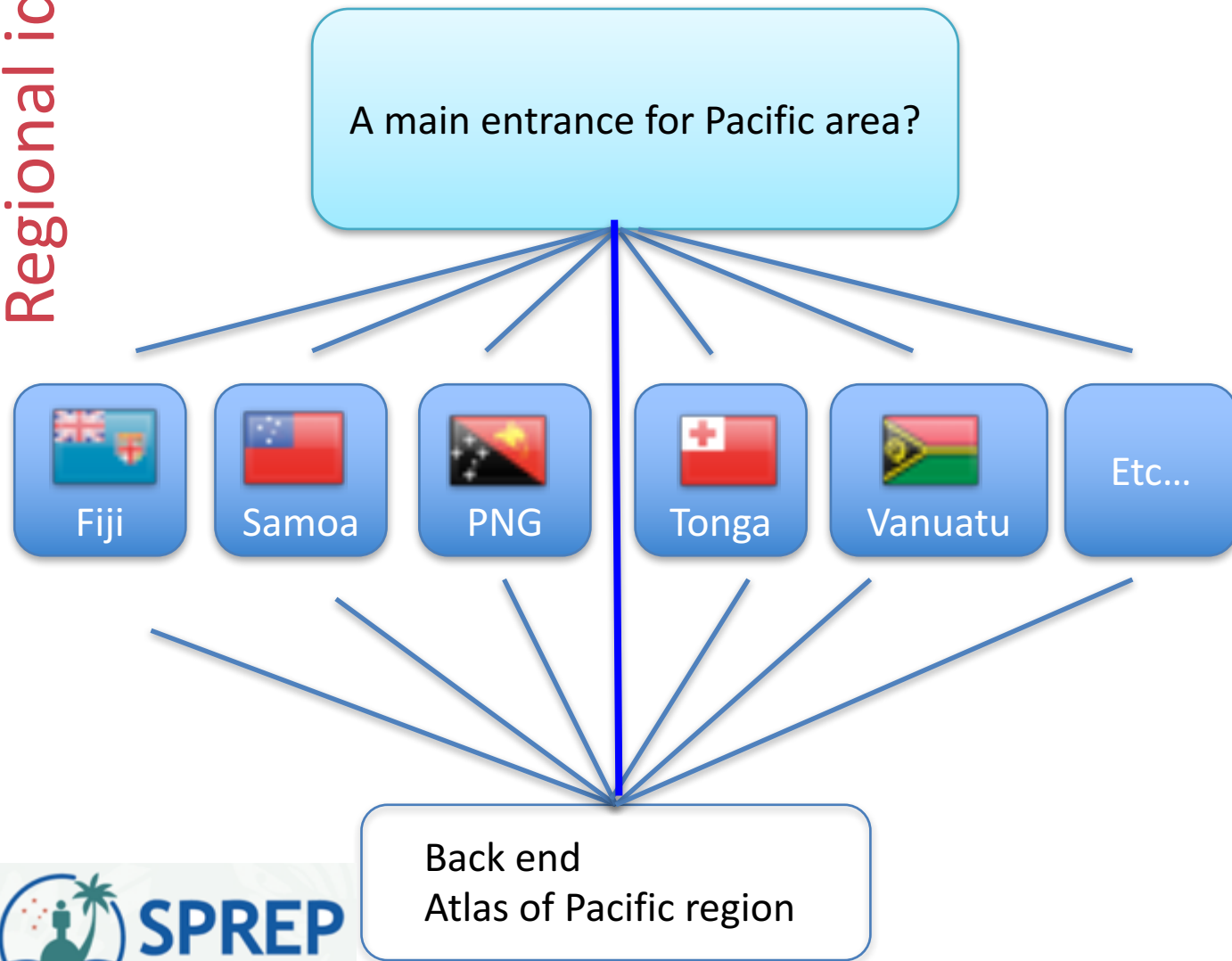
More technical workshops (at least one per year) focused on different modules of the platform (Species list, Spatial, etc.) and for different levels (beginner and advanced)

More GBIF participants will launch their portals in production: Andorra, Canadensys, Germany, Luxembourg, Mexico, Sweden, etc.

Improvement of the communication between participants (project calls, helpdesk, bug report, etc.)



discussion...



Or other large institution in the region?



Conclusion

Thank you !

Questions ?

