



Regional Engagement Workshop, BID Caribbean
June 23rd, 2017

Living Atlases community

Marie-Elise Lecoq
Lead developer, GBIF France
melecoq@gbif.fr

Dave Martin
Systems Architect, ALA
david.martin@csiro.au

Atlas of Living Australia



ALA – sharing biodiversity knowledge



>\$50 million investment

- \$8.2M NCRIS (2007-2011)
- \$30M SS EIF (2010-2012)
- \$2.8 M CRIS (2013-2015)
- \$5.7M NCRIS2013 (2013-2015)
- \$4.6M NCRIS 2015

NCRIS
National Research
Infrastructure for Australia
An Australian Government Initiative



A world-leading
collaborative e-infrastructure
integral to growing
biodiversity knowledge

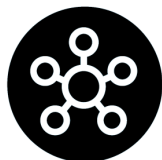


Partners – founding & beyond

- founding partners and contributors primarily biological collections and museums
- increased contribution & use by citizen science, government, industry



>67 million records
>587 data sets
>477 spatial layers
>9 billion records downloaded
>3.5 thousand users/day



National Research Infrastructure

- NCRIS established in 2006
- Currently within Education Dept
- Related environmental infrastructures TERN (terrestrial ecological info/data capture) & IMOS (marine)



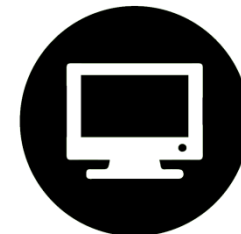
Data

- specimens
- occurrence
- images, sounds
- literature
- sequences
- more coming.....



Open source & open access

- ALA driving cultural shift regarding open access to data
- ALA at forefront of accessibility to public sector information



System

- data capture & aggregation
- data management
- data discovery
- data visualisation
- data analysis & reporting

ALA Partners

Atlas partners



An Australian Government Initiative
National Collaborative Research
Infrastructure Strategy



Australian Government
Department of Agriculture,
Fisheries and Forestry

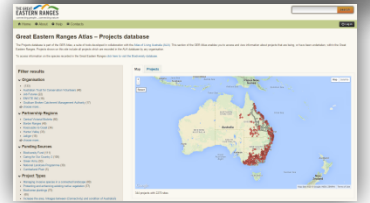
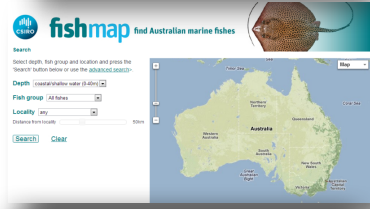
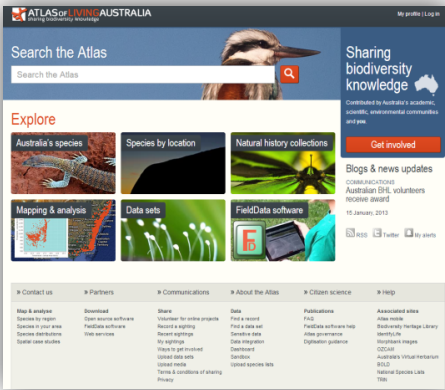


Australian Government
Department of Sustainability, Environment,
Water, Population and Communities



ABRS

What is ALA? - an open infrastructure



One infrastructure - many systems



Web Services

METADATA: ownership, location, collection method, permissions, quality control, data sensitivity

DATA: collections, field observations, images, literature, molecular data, expert knowledge



click on images to go through to site

Living atlases community



Projects and workshops

CESP Project (2012 – 2013)

- Costa Rica and Atlas of Living Australia collaborated to install ALA tools for the Costa Rican node. Hosted the first workshop around ALA tools.

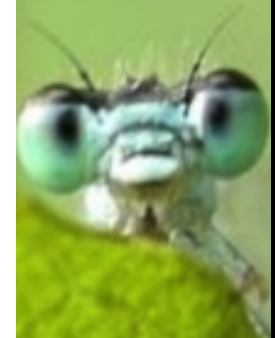
CoopBioPlat (2015 – 2016)

- Pilot Coordination Action (PCA) project funded by ERANET-LAC between South American and European countries in order to create a cooperation between institutions around national biodiversity data portals based on Atlas of Living Australia (ALA) modules.

Encounter Bay (2015 – 2016)

- CESP project between Belgium, France, Portugal and Spain in order to write the ALA Key Technical Document.

5 technical workshops around the world in 4 years (Costa Rica, Australia, France and Spain *2).



Presentations (1)

GB22, Public Symposium (October 2015) :

- *“Atlas of Living Australia for nodes: A collaborative endeavor”* (Paco Pando, 2015): presentation of the beginning of the community and the power of this kind of collaboration

TDWG 2015 & 2016 :

- 2 presentations and 1 poster talking about the GBIF France data portal as an example based on Atlas of Living Australia tools
- *“The community around Atlas of Living Australia’s platform”* (ME Lecoq, M Carboni, F Cavière, R Figueira, S Martinez de la Riva and D Martin): poster describing the Living Atlases community.



Presentations (2)

GEOBON (July 2016)

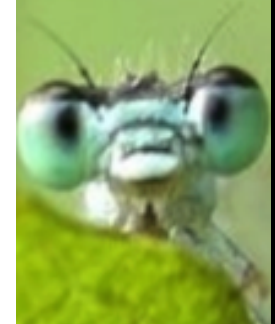
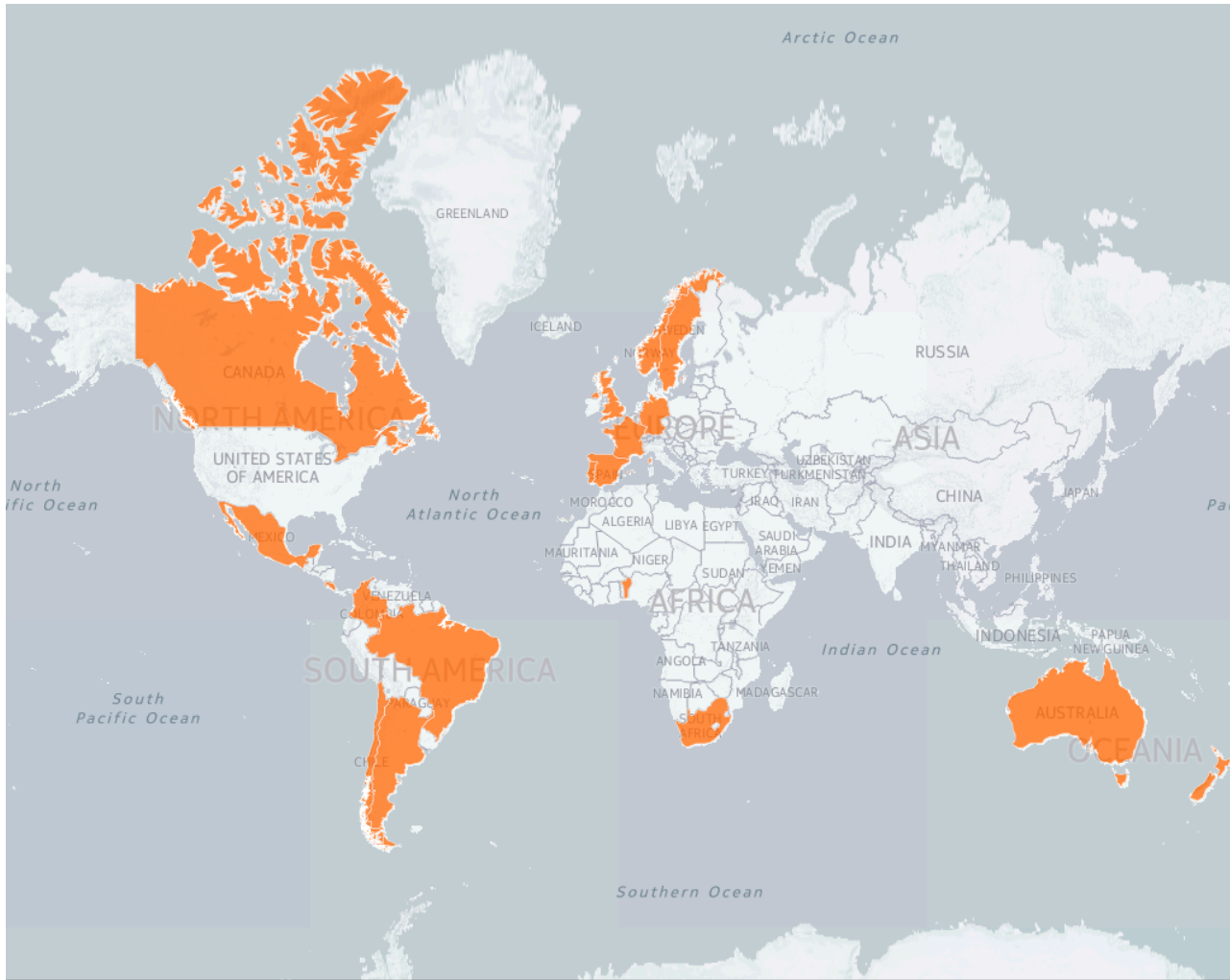
- *“Atlas of Living France : GBIF France’s portal access to primary data about biodiversity provided by French institutions”* (ME Lecoq): presentation about the community and show of an example of portal based on ALA modules.

For more information

<https://github.com/AtlasOfLivingAustralia/documentation/wiki/Presentation-ala-project>



Countries involved



Katia Cezon : https://katia.carto.com/viz/92d56bd0-a0e1-11e6-a7e6-0e3ebc282e83/public_map

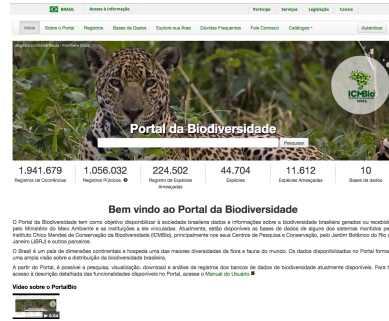


Community Data portals in production

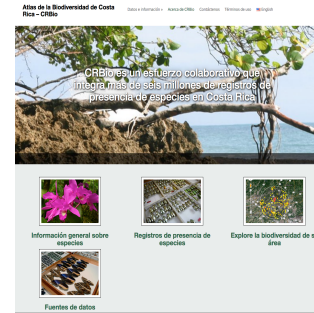
Community



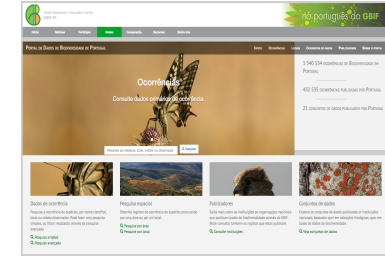
Sistemas Nacionales Datos Biológicos (Argentina)



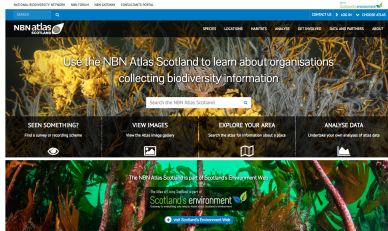
Instituto Chico Mendes de Conservação de Biodiversidade (Brazil)



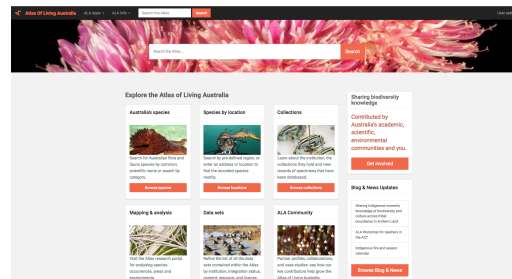
Atlas de la Biodiversidad de Costa Rica - CRBio



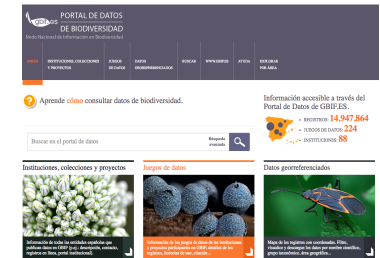
GBIF Portugal



NBN Atlas Scotland



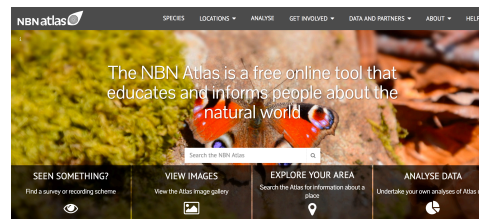
Atlas of Living Australia



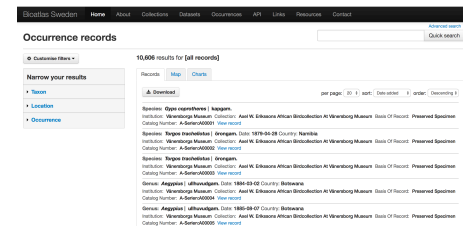
GBIF Spain



GBIF France



NBN Atlas



BioAtlas Sweden

CESP Project :

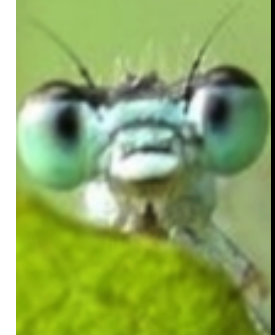
- CESP Regional event between 13 nodes to organize the 1-week workshop in 2018 in Madrid (advanced level).
- CESP Mentoring between Canadensys and GBIF France to help open the community to French-speaking countries.
- CESP Mentoring between GBIF Benin and GBIF France to install the Beninese data portal based on ALA

TDWG 2017 :

- Beginner workshop around Atlas of Living Australia tools (between one day and half a day – duration to be confirmed)

Collaboration

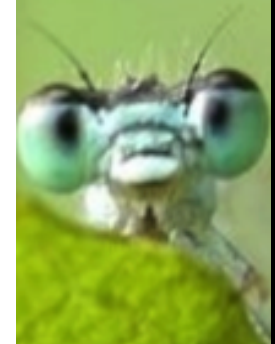
- GBIF Argentina has begin to help to install ALA in Colombia.
- GBIF Spain has begin to work on the installation of the ALA portal in GBIF Andorra.



2017 / 2018

INTERREG SUDOE Project

- BIOGLASER: collaboration between GBIF Andorra, GBIF France, GBIF Spain, GBIF Portugal and other institutions to create a biogeographic Living Atlas based on ALA modules for a better management of the biodiversity in the SUDOE area.



Future...

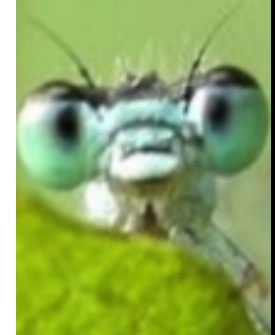
More technical workshops (at least one per year) focused on different modules of the platform (Species list, Spatial, etc.) and for different levels (beginner and advanced)

More GBIF participants will launch their portals in production: Andorra, Canadensys, Germany, Luxembourg, Mexico, Sweden, etc.

Creation of an **official webpage** for the community.

Improvement of the communication between participants (project calls, helpdesk, bug report, etc.)

Project COST for 2018/2019 around ALA to perpetuate the ALA consortium.



Thank you !

Questions ?

Mailing List

- ala.portal@lists.gbif.org
- Registration: lists.gbif.org/mailman/listinfo/ala-info

HipChat Room (for developers)

- Public access: <https://www.hipchat.com/gx1ej3K6Q>

Documentation

- Official web page on the GBIF.org (demo):
<https://demo.gbif.org/programme/82953/living-atlases>
- ALA Key Technical Document
<http://www.gbif.org/project/2015-ala-internationalization>
- ALA GitHub folder
<https://github.com/atlasoflivingaustralia/documentation>

